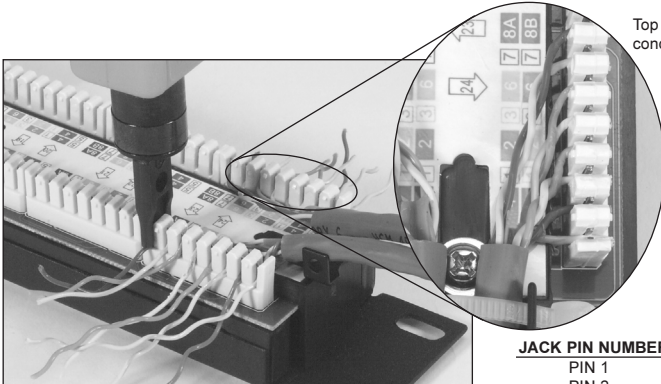
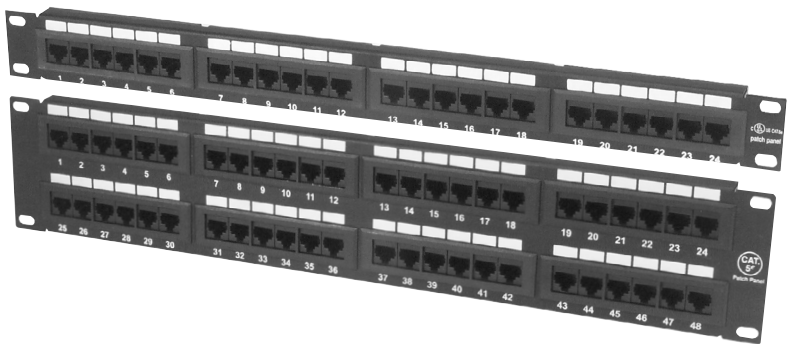


**CATEGORY 5E/6**  
**PATCH PANELS 24/48 PORT**

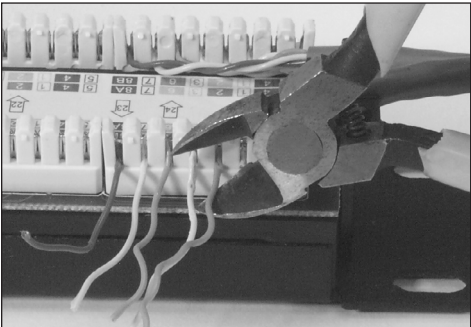


Top view of  
conductors

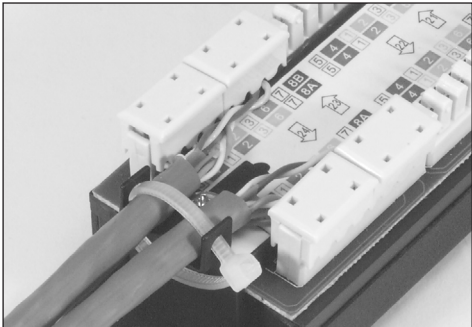
**Note:**  
To insure connection  
performance, maintain  
conductor twist at the  
IDC terminal.

Place the insulated conductor pairs into the color  
coded contacts being careful to maintain the  
conductor twist. Punch down the conductors  
using a 110 style tool.

JACK PIN NUMBER	EIA 568A	EIA 568B
PIN 1	White/Green	White/Orange
PIN 2	Green	Orange
PIN 3	White/Orange	White/Green
PIN 6	Orange	Green
PIN 4	Blue	Blue
PIN 5	White/Blue	White/Blue
PIN 7	White/Brown	White/Brown
PIN 8	Brown	Brown



Trim off excess wire (if your 110 tool does not cut).



Complete the installation by securing cables to  
panel using included wire ties and placing  
retainer caps onto the terminal.